

*McGraw-Hill Mathematics*

**Math Tool Chest**  
Intermediate Network

Math Tool Chest is a trademark of McGraw-Hill School Division.  
AppleShare, Mac, Macintosh, and Power Macintosh are trademarks of Apple Computer, Inc., registered in the United States and other countries. System 7.6.1 is a trademark of Apple Computer, Inc.  
Novell and NetWare are registered trademarks of Novell, Inc.  
Windows and Windows NT are registered trademarks of Microsoft Corp.  
Sound Blaster is a registered trademark of Creative Technology Ltd.  
IBM is a registered trademark of IBM Corp.  
Adobe and Adobe Acrobat are registered trademarks of Adobe Systems.

All other products are trademarks or registered trademarks of their respective owners.

LIMITED WARRANTY: THIS MANUAL IS INTENDED TO ASSIST IN THE USE OF MATH TOOL CHEST INTERMEDIATE EDITION AND WILL HELP YOU MASTER THE FUNCTIONS, FEATURES AND USE OF THE PRODUCT, WHICH HAS BEEN PREPARED WITH GREAT CARE TO HELP YOU ACHIEVE YOUR EDUCATIONAL OBJECTIVES.

MCGRAW-HILL SCHOOL DIVISION PROVIDES YOU WITH THE LIMITED WARRANTY WHICH IS FURNISHED IN THE SOFTWARE LICENSE AGREEMENT WHICH ACCOMPANIES THE PRODUCT. OTHERWISE, THIS MANUAL AND PRODUCT ARE SOLD "AS IS," WITHOUT WARRANTY AS TO CONTENT, USE, PERFORMANCE, OR THE RESULTS OBTAINED FROM USE OF THE MANUAL OR THE PRODUCT. IN ADDITION, ALL WARRANTIES OF MERCHANTABILITY OR FITNESS FOR ANY PARTICULAR PURPOSE ARE ALSO EXCLUDED.

IN NO EVENT, WHETHER AS A RESULT OF BREACH OF CONTRACT, WARRANTY, OR TORT (INCLUDING NEGLIGENCE), WILL MCGRAW-HILL SCHOOL DIVISION BE LIABLE FOR ANY DAMAGES, INCLUDING ANY LOST PROFITS, LOST SAVINGS, OR OTHER INCIDENTAL OR CONSEQUENTIAL DAMAGES ARISING OUT OF THE CONTENTS OR USE OF THIS MANUAL OR PRODUCT, INCLUDING LOSS OF RECORDS OR DATA, EVEN IF MCGRAW-HILL SCHOOL DIVISION HAS BEEN ADVISED OF THE POSSIBILITY OF SUCH DAMAGES, OR FOR ANY CLAIM BY ANY OTHER PARTY.

SOME STATES DO NOT ALLOW THE LIMITATION OR EXCLUSION OF WARRANTIES OR OF LIABILITY FOR INCIDENTAL OR CONSEQUENTIAL DAMAGES. IN SUCH EVENT, THE ABOVE LIMITATION OR EXCLUSION MAY NOT APPLY TO YOU.

**McGraw-Hill School Division**   
*A Division of The McGraw-Hill Companies*

Published by the McGraw-Hill School Division, a division of the McGraw-Hill Education Group of The McGraw-Hill Companies, Inc., 2 Penn Plaza, New York, NY 10121.  
Copyright © by McGraw-Hill School Division.

All rights reserved. No part of this publication may be reproduced or distributed in any form or by any means, downloaded, or stored in a database or retrieval system, without the prior written permission of the publisher.

ISBN 0-02-111503-6

1 2 3 4 5 6 7 8 9 102 02 01 00

# Contents

<b>Welcome</b> .....	1
About Math Tool Chest .....	2
Sections of This Guide .....	3
Getting to Know This Guide.....	4
Additional Math Tool Chest Documentation .....	6
<b>Installation</b> .....	7
System Requirements .....	8
Macintosh Installation .....	9
Windows Installation .....	11
<b>Getting Started and Setting Up</b> .....	13
Starting the Program.....	14
Using Teacher Utilities to Set Up .....	14
Introducing Math Tool Chest to Students.....	14
Getting Students Started.....	15
Creating a List of Student Names.....	15

<b>Math Tool Chest Basics</b> .....	17
The Parts of the Math Tool Chest Screen .....	18
The Quit, Projects, and Print Buttons .....	20
The Start Over, Help, Undo, and Photo Buttons .....	22
<b>Textbook Correlation Charts</b> .....	25
Grade 3 .....	26
Grade 4 .....	30
Grade 5 .....	34
Grade 6 .....	38
<b>Graphs</b> .....	43
Graph Type .....	44
Working with Graphs .....	46
Using Bar Graphs .....	46
Using Line Graphs .....	48
Using Circle Graphs .....	50
Using Coordinate Graphs .....	52
The Graphs Button Bar .....	54
<b>Tables</b> .....	67
Using Tables .....	68
The Tables Button Bar .....	70

<b>Geometry</b> .....	77
Using Geometry .....	78
The Geometry Tools .....	80
The Geometry Button Bar .....	84
<b>Manipulatives Tools</b> .....	87
Working with the Manipulatives Mats .....	88
<b>Fractions</b> .....	92
Using Fractions Open Mats .....	92
Using Fractions Addition Mats .....	94
Using Fractions Subtraction Mats .....	96
The Fractions Button Bar .....	98
<b>Money</b> .....	100
Using Money Open Mats .....	100
Using Money Addition Mats .....	102
Using Money Subtraction Mats .....	104
The Money Button Bar .....	106
<b>Base 10</b> .....	108
Using Base 10 Open Mats .....	108
Using Base 10 Addition Mats .....	110
Using Base 10 Subtraction Mats .....	112
Using Base 10 Multiplication Mats .....	114
Using Base 10 Division Mats .....	116
The Base 10 Button Bar .....	118

<b>Counters</b> .....	122
Using Counters Open Mats .....	122
Using Counters Addition Mats .....	124
Using Counters Subtraction Mats .....	126
Using Counters Multiplication Mats .....	128
Using Counters Division Mats .....	130
The Counters Button Bar .....	132
<b>Probability Tools</b> .....	133
Working with Probability Tools .....	134
Quick Linking Probability Tools .....	136
<b>Coin Toss</b> .....	138
Using Coin Toss .....	138
The Coin Toss Data Area .....	138
The Coin Toss Button Bar .....	140
<b>Spinner</b> .....	142
Using Spinner .....	142
The Spinner Data Area .....	142
The Spinner Button Bar .....	144
<b>Tumble Drum</b> .....	146
Setting Up Tumble Drum .....	146
Using Tumble Drum .....	148
The Tumble Drum Data Area .....	148
The Tumble Drum Button Bar .....	150

<b>Notes</b> .....	151
Using Notes .....	152
The Notes Tools .....	154
The Notes Button Bar .....	158
<b>Calculator</b> .....	161
Using the Calculator .....	162
Calculator Keys .....	163
Calculator Error Messages .....	164
<b>Teacher Utilities &amp; Assessment Techniques</b> .....	165
Teacher Utilities .....	166
Creating Your Own Project Templates .....	169
Assessment Techniques .....	170
<b>Troubleshooting</b> .....	171
Software Support .....	174
<b>Index</b> .....	175

## Installation

This chapter outlines system requirements necessary to install and run Math Tool Chest Intermediate on networked computers, as well as instructions for installing the product to a network workstation and file server. Before you continue, be sure your server and workstations meet these respective requirements.

## System Requirements

### Network Server

Math Tool Chest works on a variety of network configurations. The capabilities and setup of your server and its connected workstations affect the overall speed and performance of the product. Because of the wide variety of network server configurations, the following information is only a guide.

### Macintosh and Windows

- One of the following:
  - Microsoft® Windows NT® Server 3.5.1 with Service Pack 5
  - Microsoft Windows NT Server 4.0 with Service Pack 4 or higher
  - Windows 2000 with Service Pack 4 or higher
  - Novell® NetWare 4.11, 4.2 and 5.0
  - AppleShare® 6.1
  - Mac® OS X
- Approximately 80 MB server space

### Macintosh® Workstation

- Power Macintosh®
- System 7.6.1® or higher
- 16 MB available RAM (minimum)
- 16 MB available hard drive space (minimum)
- 13-inch color monitor, or larger, displaying 256 colors
- Adobe Acrobat Reader 4.0 (included on Math Tool Chest CD-ROM)
- 2x CD-ROM drive (4x or higher recommended)
- Mouse
- Printer recommended

### Windows® Workstation

- IBM®-compatible 486DX/66 MHz (or higher)
- Microsoft Windows® 95, Microsoft Windows 98, Microsoft Windows 2000 or Microsoft Windows NT Workstation 4.0 with Service Pack 4
- 16 MB available RAM (minimum)
- 16 MB available hard drive space (minimum)
- SVGA monitor displaying 256 colors
- Adobe Acrobat Reader 4.0 (included on Math Tool Chest CD-ROM)
- 2x CD-ROM drive (4x or higher recommended)
- Sound Blaster®-compatible sound card
- Speakers
- Mouse
- Printer recommended

## Macintosh Installation

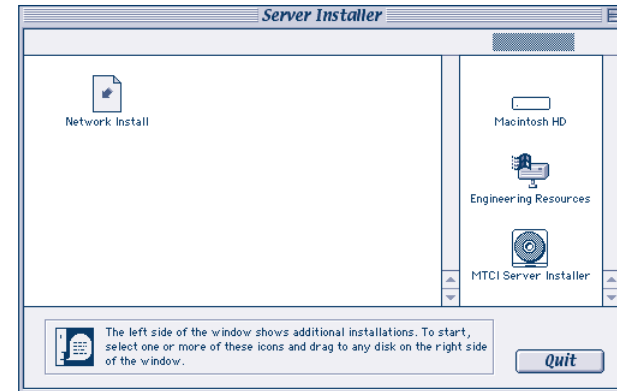
Use these steps to install to a Macintosh network server and workstations. Complete the server installation before installing to workstations. During server installation, your computer cannot perform other functions.

### Installing to a Macintosh Server

Perform these steps from any workstation that has read and write access to the server:

1. Start your computer. Quit any open applications.
2. From the Apple menu, open Chooser.
3. Click AppleShare and choose a network volume. Then click OK.
4. If prompted, log in with your user name and password.
5. Close the Chooser window.
6. Insert the Math Tool Chest Intermediate Network Edition CD into the CD-ROM drive.

7. Open the CD window and double-click the Server Installer. Click to continue. The Network Install icon appears.

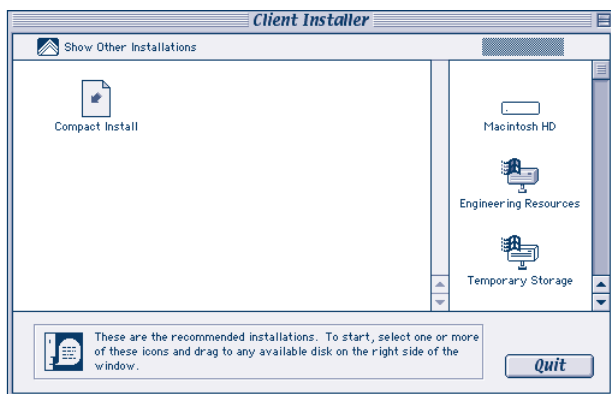


8. Click the Network Install icon on the left and drag it to the desired volume on the right side of the window. A progress bar indicates file transfer (about 50 MB) to the server.
9. Click Quit to exit the Installer.

## Installing to a Macintosh Workstation

Perform these steps to place Math Tool Chest Intermediate Network in a folder on a Macintosh workstation within an existing network.

1. Open the volume on the server where you installed Math Tool Chest Intermediate.
2. Open the folder called MTCI and then double-click the Client Installer.
3. Click anywhere in the window. The Client Installer screen appears.



4. Click Compact install to choose the option that uses less hard drive space.  
Or, click the Show Other Installations button to choose a Full installation, which copies all program files to your hard drive.

5. Drag the installer to the volume on the right side of the screen (your hard drive). A progress bar indicates file transfer (about 80 MB for a Full installation).
6. Click Quit. The program alias Math Tool Chest Int. Network has been created on your desktop.

## Macintosh Workstation Uninstall

To uninstall Math Tool Chest Intermediate Network, drag the program folder from your hard drive to the Trash.

Note that after you perform a Macintosh Workstation Uninstall, you can still retrieve student data by accessing the folder MTCDATA on the server.

## Windows Installation

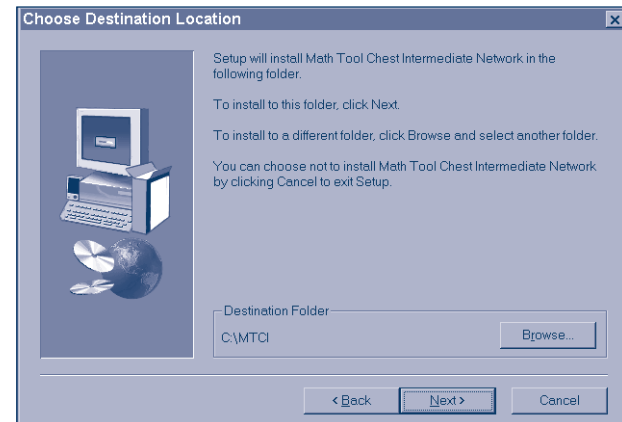
Use these steps to install Math Tool Chest Intermediate Network to a Windows-compatible network server and workstations. Complete the server installation before installing to workstations. During server installation, your computer cannot perform other functions.

### Installing to a Windows Server

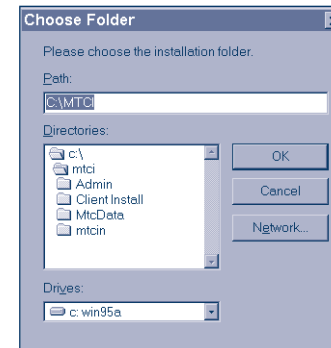
Perform these steps from any workstation that has read and write access to the server.

1. Start your computer. Quit any open applications.
2. When the desktop appears, insert the Math Tool Chest Intermediate Network CD into the CD-ROM drive.
3. Follow these steps to map a drive from your workstation:
  - a. Double-click Network Neighborhood.
  - b. Double-click the server where you want to install the program.
  - c. Right-click the volume where you want to install the program.
  - d. Select Map Network Drive. Assign a drive letter or choose the default. Be sure you remember the drive letter assigned.
  - e. To create a folder for the files, right-click in the window and select New Folder. Give the folder a name of eight characters or less, such as MTCIN.

4. Return to the Math Tool Chest Intermediate CD window and click SETUP.EXE.
5. Click Next and then Click Browse. Use the Drives menu to select the drive you just mapped.



6. Double-click the directory you just created (such as "MTCIN"). Click OK.

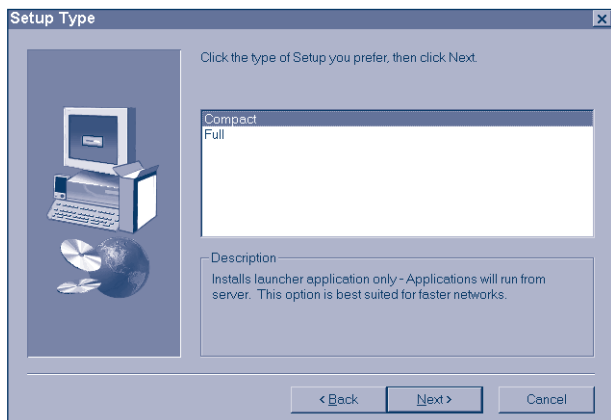


7. Click Next. A status bar indicates file transfer (about 80 MB). Transfer times varies, depending on your server. The Installation Complete screen appears.
8. Click Finish to complete installation.

### Installing to a Windows Workstation

Workstation installation places Math Tool Chest Intermediate Network in a folder on a workstation within an existing network.

1. Double-click My Computer and then double-click the mapped drive containing Math Tool Chest Intermediate.
2. Double-click the Client Install folder.
3. Double-click the SETUP.EXE icon. The Welcome screen appears.
4. Click Next.
5. Click Next to accept the default installation location, C:\MHSCHOOL. To install to a different location, click Browse and select a location. The Setup screen appears.



6. Select Compact or Full. Compact uses less hard drive space. A status bar indicates the file transfer.
7. Click Finish to complete installation.

### Windows Workstation Uninstall

1. From the Start button, point to Programs.
2. Point to the McGraw-Hill School folder (or to the location where the program has been installed).
3. Click Math Tool Chest Intermediate Network.
4. Click Remove Math Tool Chest Intermediate Network.

Note that after you perform a Windows Workstation Uninstall, you can still retrieve student data by accessing the folder C:\MTCDATA on the server.